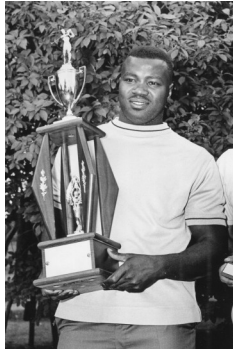


## Wiley Williams: Weequahic Winner

Wiley Williams developed his game on Essex County's public golf courses and won his first Essex County men's golf championship in 1967. He dominated local public course golf for several years.

The public course at Weequahic provided Williams, as an African American man in the 1960's, the opportunity to play golf, which he started at 21 years of age. He and Marvin Stith were the first African American golfers to win a major New Jersey golf event in 1969 when they took the New Jersey State Golf Association four-ball title, beating the defending champions.



Essex County Champ

## The Future Tees Off at Weequahic

Over the years various organizations have partnered with Weequahic to promote youth golf. The First Tee of Essex County, established in 2006, impacts the lives of young people by providing educational programs that build character, instill life-enhancing values, and promote healthy choices through the game of golf.

In 2012 Essex County Executive Joseph N. DiVincenzo, Jr. and The First Tee opened the Youth Learning Center doubling the number of programs and expanding the programs year round.



Building youth skills - past and present

## A Statement from County Executive Joseph N. DiVincenzo, Jr.



Congratulations to Essex County Weequahic Golf Course on its 100<sup>th</sup> Anniversary! Weequahic continues its tradition of welcoming golfers of all backgrounds to its challenging greens and picturesque fairways. A century may have passed, but Weequahic Golf Course is still the place where enthusiasts can experience memorable moments on the links.

## Where to Play: Essex County's Courses

The County Executive and the Board of Chosen Freeholders invite you to enjoy all of Essex County's golf facilities. In addition to Weequahic Golf Course in Newark, Essex County offers Hendricks Field Golf Course in Belleville, Francis A. Byrne Golf Course in West Orange, and the Essex Golf Driving Range in Roseland.

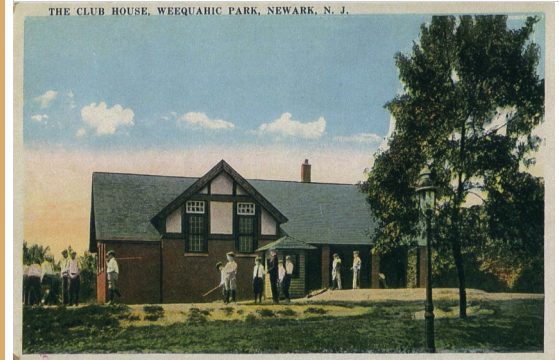


Experience Essex County Golf for Yourself!  
[www.golfessexcounty.org](http://www.golfessexcounty.org)

County of Essex  
Department of Parks, Recreation & Cultural Affairs  
115 Clifton Avenue  
Newark, NJ 07104  
973-268-3500  
[www.essexcounty.org](http://www.essexcounty.org)



100 YEARS  
On the Weequahic Greens



Postcard of Weequahic Club House circa 1914

Already the first county park system in the nation, Essex County led the way again on July 4, 1914 when it opened the first public golf course in New Jersey at Weequahic Park in Newark. Requested by citizen petition and letter-writing, the course provided the general public an opportunity to play golf and made no distinction by race, religion, gender, or economic status.



Teeing off opening day were (left to right) golf house architect F.A. Wright, golf pro John (Jack) Langlands, course designer George Low, and Essex County Park Commissioner Robert S. Sinclair.



# Weequahic Golf Course:

## The Early Years

George Low, one of the country's chief experts on golf and the Baltusrol Golf Club's professional, was asked to design the golf course. He first staked out an 18-hole plan, but the Park Commissioners were unwilling to sacrifice trees. They settled on 9 holes.



9-hole layout in 1914

seven days a week, initially with only afternoon hours on Sunday. That first partial season 7,000 players used the links.

Weequahic's first golf pro was John Langlands.

In 1914, an annual permit cost just \$1. The course was open



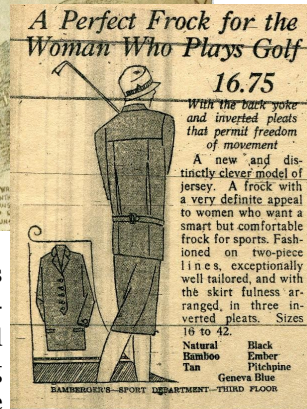
“Golf is another sport that has taken a firm hold upon the frequenters of this park. A year ago it was decided to lay out a nine-hole course as an experiment. It was opened on July Fourth. A small building for the accommodation of golfers of both sexes was erected. It contains shower baths, lavatories and about 120 lockers. A water system was laid out so that the greens might be sprinkled in dry weather. The response of the public to this added park opportunity was prompt and enthusiastic.” – 1914 Annual Report

## Expansion Needed

Growing enthusiasm for golf in the following decades resulted in overcrowding at Weequahic. One nearby resident recounted being the 41<sup>st</sup> person in line at the



The crowded conditions coupled with inexperienced players, as noted in a Newark Evening News cartoon, led the Park Commission to pass a special ordinance limiting use by non-resident guests.



## 18-Holes, Finally

The 1929 addition of Hendricks Field in the north of the county may have eased crowding, but only temporarily. Again the public signed petitions and enlisted help from the County Freeholders to push for additional facilities. Several possibilities failed, including a 1947 attempt to purchase the private Essex County Country Club's west course. (It was not until 32 years later that the addition of that course, Francis A. Byrne, was accomplished.)

An 18-hole course, designed by architect Hal Purdy, was finally realized as part of an extensive renovation of Weequahic Park in 1969, opening for the 1970 season.



Enjoying the Weequahic greens

## Better Than Par: Weequahic Upgrades

In 2007 Essex County embarked on a two-year \$7 million project to modernize and upgrade conditions at each of the County's three public golf courses. Essex County Executive Joseph N. DiVincenzo, Jr. stated the aggressive project “addressed concerns at each course and will enable us to remain competitive and offer golfers first class playing conditions.”

Funded by revenue generated by the golf courses, renovations at Weequahic were completed in October 2009. The course was redesigned to make the holes more challenging. The drainage system was upgraded and a new pumping and filtration system was installed.

Additional bunker and feature work was performed on nearly every hole. More than half of the course's tees were rebuilt or expanded to provide better



playing conditions. At the 18<sup>th</sup> hole, new forward and back tees were added, a new bunker was carved out to the right of the fairway and another bunker was constructed on the left side of the green to provide a great finishing hole.